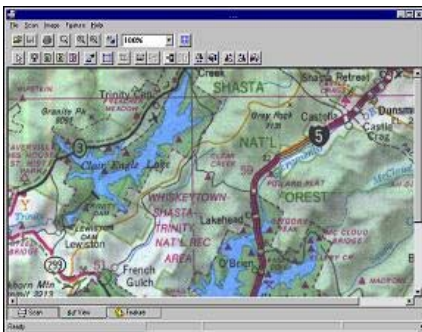




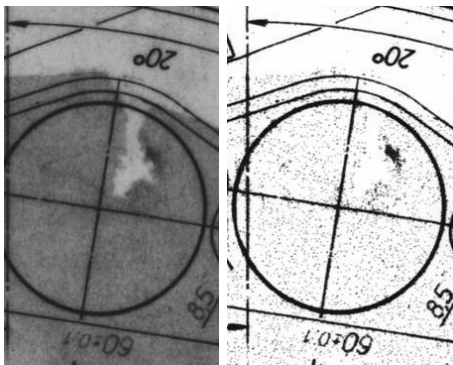
WIDEimage^{NET} Software



SCAN



VIEW



BEFORE

AFTER



WIDEimage^{NET} is a fully integrated scanning, viewing, converting and printing system for GTCO CalComp color and monochrome scanners. Its Ultra-fast scan-to-disk capabilities make it the perfect link between your GTCO CalComp scanner and popular software for graphics, reprographics, GIS, CAD, DTP and Archival.

With WIDEimage^{NET} software and WIDESystem^{NET}, companies can now share one or more scanners across its departments no matter their locations. The Scan-to-network feature enables you to send scans directly to specific computers set up to receive the image data. This powerful feature lets you distribute and save images directly through your network and through the internet.

Features Include:

- ◆ Scan and pre-scan interactively through Overview and Detail windows
- ◆ Over 50 industry standard file formats provided
- ◆ Advanced batch scanning and batch conversion for high volume document handling
- ◆ Effective, fast and reliable large format printing to save time and money
- ◆ Print processing handled in the software for speed
- ◆ Full compatibility with common large format printers
- ◆ Ultra fast viewer with tools for post-scanning tasks
- ◆ Feature extraction screen for creating, editing, and downloading filters for classified scanning
- ◆ Scan to PDF format
- ◆ Scan to network, also across the internet

WIDEimage^{NET} Software Specifications

WIDEimageNET is composed of three screens, each equipped with tools specifically designed for professional scanning tasks.

Scanning

Scan and prescan interactively. The split screen with Overview and Detail windows lets you move around the image, and try out different settings while you zoom in and view the effects on-line.

- ◆ Color modes—24-bit true color, 8-bit indexed color, 8-bit classified color
- ◆ Realistic 8-bit graytone (256 grayshade levels)
- ◆ Printed copies with B/W copy normal, B/W copy photo, B/W copy adaptive modes
- ◆ Scan to file with B/W adaptive and B/W threshold modes
- ◆ RGB tone transfer curves, adjustable black and white point
- ◆ Brightness, contrast, tonal adjustment
- ◆ Sharpen/soften/blur controls
- ◆ Scan Window—Select a limited portion for scanning
- ◆ Automatic alignment, rotation and inversion during scanning
- ◆ Batch scanning
- ◆ Direct scan to PDF with option for making image quality settings
- ◆ Option for scanning to any scan client located on the internet or the local LAN

Viewing

The WIDEimage^{NET} ultra fast viewer offers all the tools you need for post scanning tasks. You can work with the image just scanned or load one you scanned previously. The viewer supports:

- ◆ Effective printing and conversion of scanned files
- ◆ Sophisticated zooming tools
- ◆ Brightness and contrast adjustment
- ◆ Color manipulation and color to grayscale conversion
- ◆ Color counting and decreasing the number of colors
- ◆ Speckle removal, hole filling and color inversion
- ◆ Cropping, alignment, rotation
- ◆ Measuring of distances and angles
- ◆ Batch conversion

Feature Extraction

In the Feature screen, you create and edit a color feature extraction filter. The filter can be downloaded to the scanner for color classified scanning of whole groups of similar maps or drawings. The Feature screen includes the following tools:

- ◆ Three ways to view image colors—Main image, Color Wheel and Histogram
- ◆ Switch between LUT filter viewing and RGB true color viewing
- ◆ Automatic creation of initial feature extraction (LUT) filter
- ◆ Button tools for marking and protecting colors
- ◆ Button tools for merging and removing colors
- ◆ Button tools for inserting, importing and exploding colors
- ◆ Edit, apply and undo buttons

GTCO CalComp
PERIPHERALS

www.gtcocalcomp.com

Corporate Office

GTCO CalComp Inc.
7125 Riverwood Drive
Columbia, MD 21046
410-381-6688
1-800-344-4723
Fax: 410-290-9065
Sales@gtcocalcomp.com

Western Sales Office

GTCO CalComp, Inc.
8224 East Evans Road
Scottsdale, AZ 85260
480-948-6540
1-800-856-0732
Fax: 480-948-5508
Sales@gtcocalcomp.com

European Sales Headquarters

GTCO CalComp GmbH.
Kreiller Strasse 24
81673 Muenchen
Germany
+49 (0) 89 37012-0
Fax: +49 (0) 89 37012-12
EUSales@gtcocalcomp.com