

— Troubleshooting Tip —

Problem Description

During a PRS PowerPoint Session, the changes made to the position and size of the Response Grid are not being remembered from one Question Slide to the next.

Problem Solution



These instructions apply only to Windows 2000 and XP.

You must manually edit the Preferences file in your login directory. (A computer that has multiple PRS users will have a login directory for each user in the **Documents and Settings** folder.)

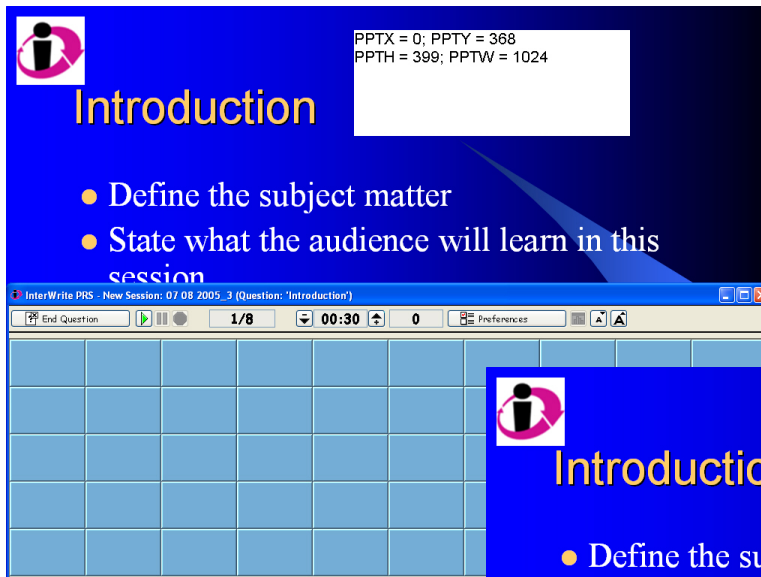
- 1 Close PRS and PowerPoint.
- 2 Locate the Preferences file *PRS.properties* in *userdirectory*, which is typically found here:
My Computer\C:\Documents and Settings\userdirectory
- 3 Right-click on *PRS.properties* and select the *Open With >* option. From the dropdown menu select the *WordPad* option.

The *PRS.properties* file will display in a WordPad window.

- 4 Edit the values for **PPTX**, **PPTY**, **PPTW**, and **PPTH**.
- 5 If the values PPTX, PPTY, PPTW, and PPTH aren't in the file, add them—one value per line—to the end of the file. (See examples on the following page.)
- 6 Save the file.

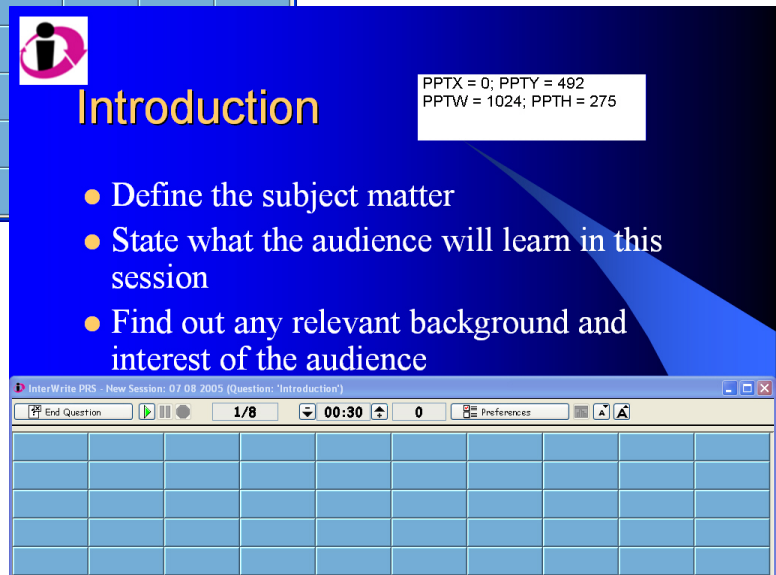
— Troubleshooting Tip —

PPTX, PPTY, PPTW, and PPTH describe, respectively, the X and Y coordinates of the upper left corner (starting location) and the width and height of the Response Grid during the PowerPoint Session. The screenshots below show two Response Grid positions (half and quarter screen) and their respective preference settings. These settings in the examples below are based on a screen resolution of 1024 by 768.



Half Screen

PPTX = 0
PPTY = 368
PPTW = 1024
PPTH = 399



Quarter Screen

PPTX = 0
PPTY = 492
PPTW = 1024
PPTH = 275

You may have to experiment and change the settings a few times before you get your optimal Response Grid positioning. Remember to save the file each time you change the coordinates and the width and height settings. Run a PowerPoint Session to verify the Response Grid position and size. When you have established the optimal settings, the Response Grid will always appear in that position at that size.